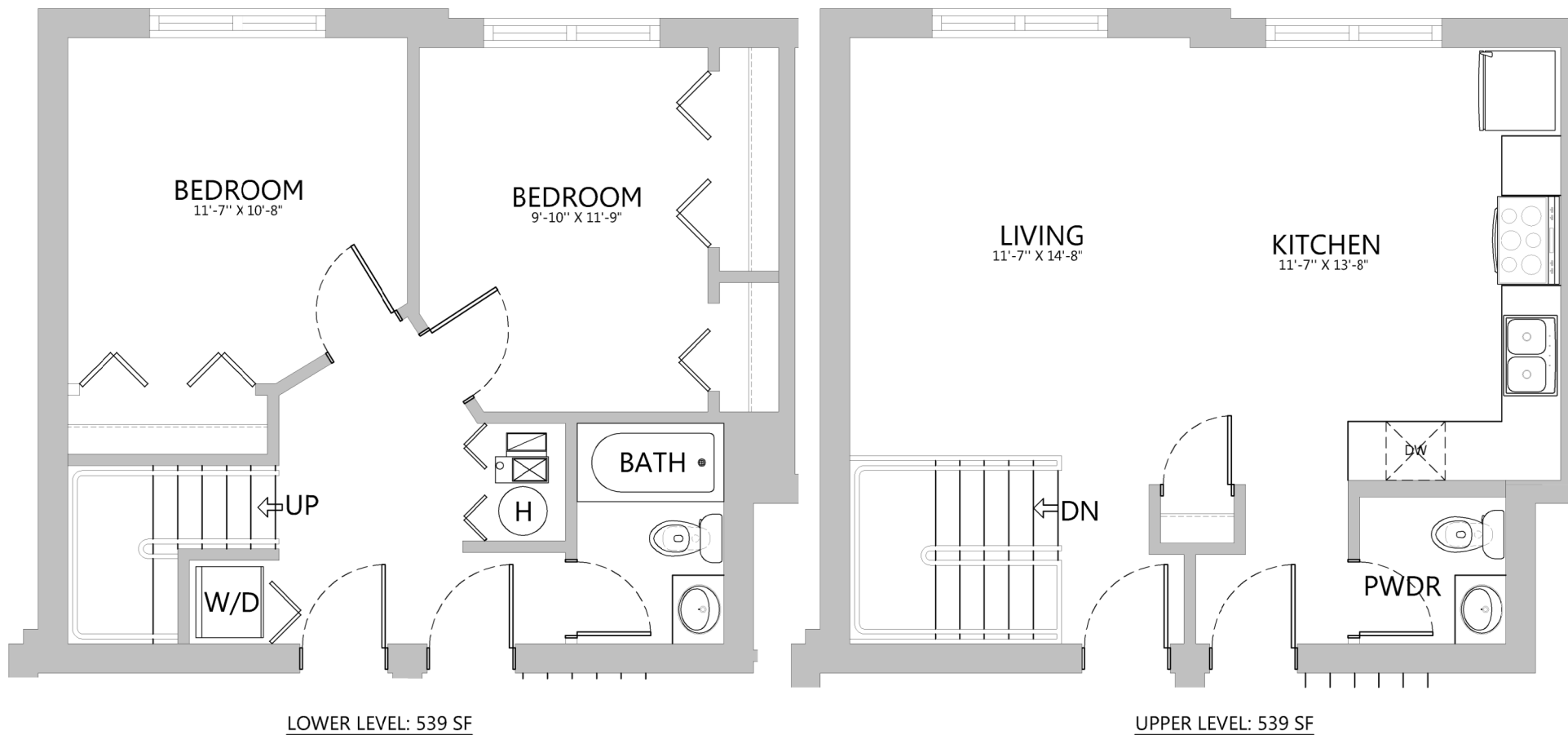


Christiana Unit 3335 #1



APPROXIMATE LIVING AREA PER BOMA STANDARDS: 1,078 SF

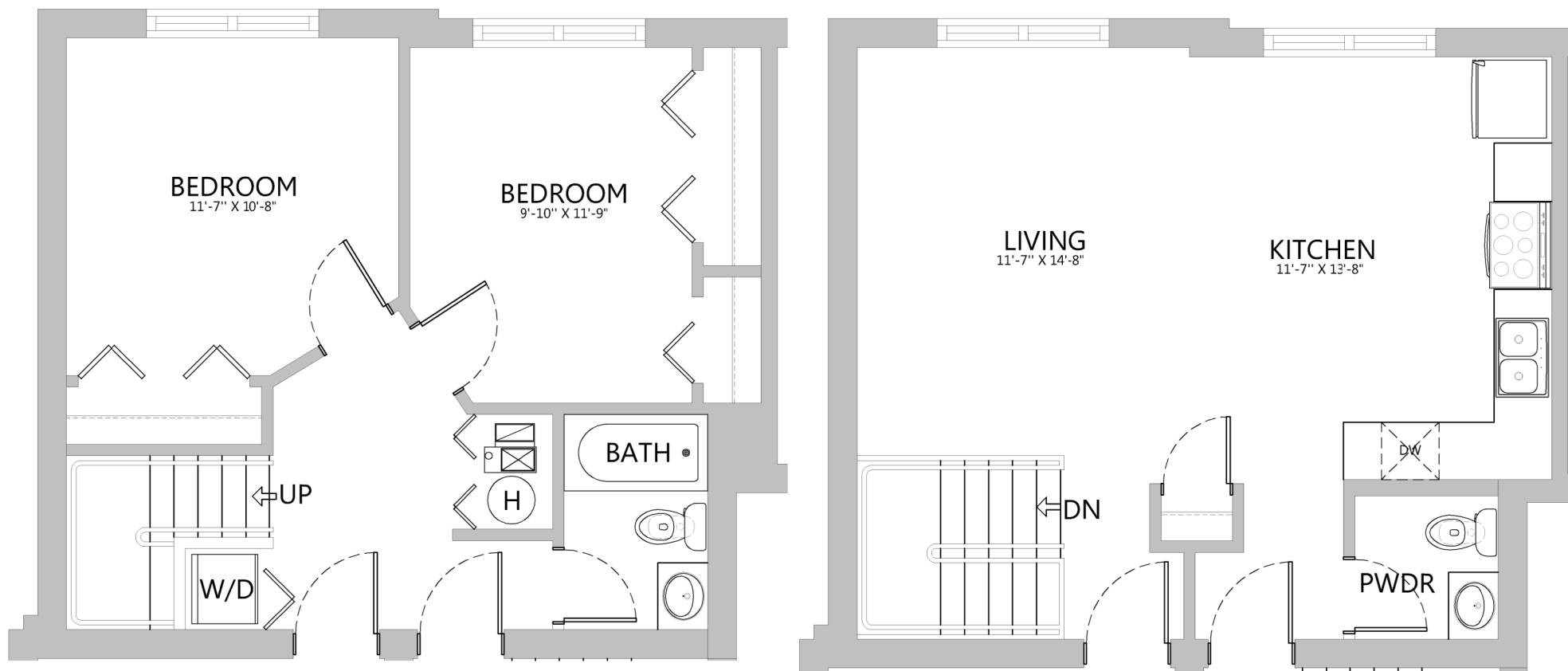
GENERAL NOTE: All square footages and room dimension are approximate and may vary (from 5% +/-) from floor plans provided. All homes are sold in as is condition and pricing, promotional programs and incentives are subject to change without notice



HP VENTURES GROUP LLC
CHRISTIANA PROJECT



Christiana Unit 3335 #2



LOWER LEVEL: 539 SF

UPPER LEVEL: 539 SF

APPROXIMATE LIVING AREA PER BOMA STANDARDS: 1,078 SF

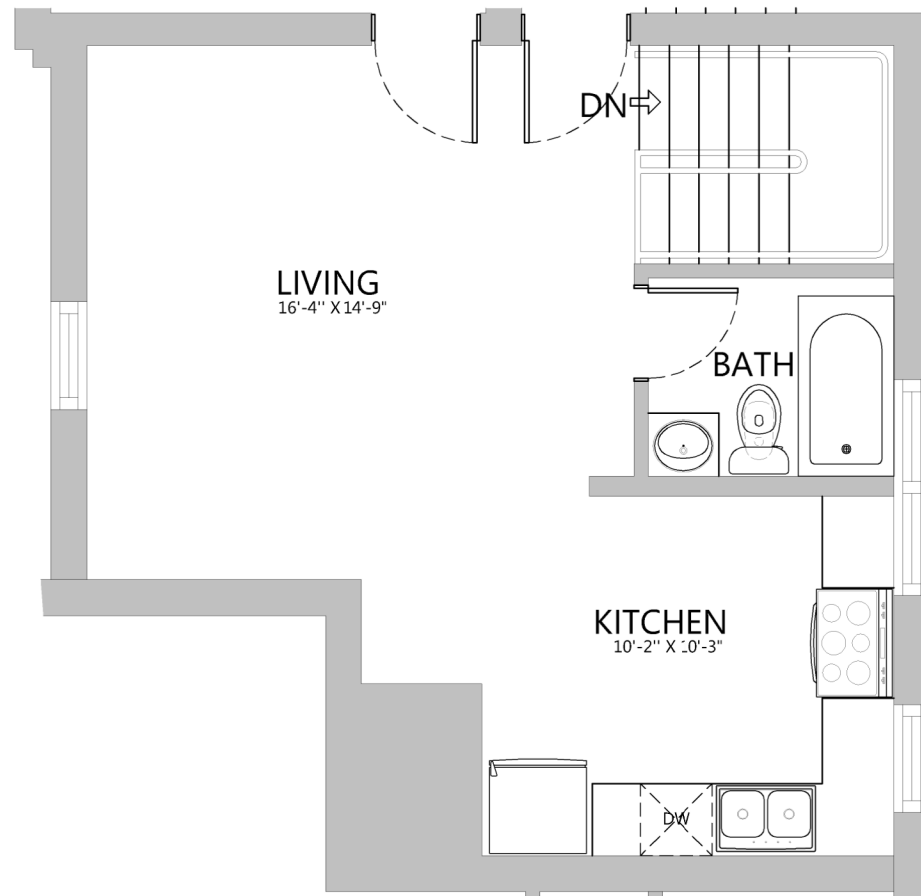
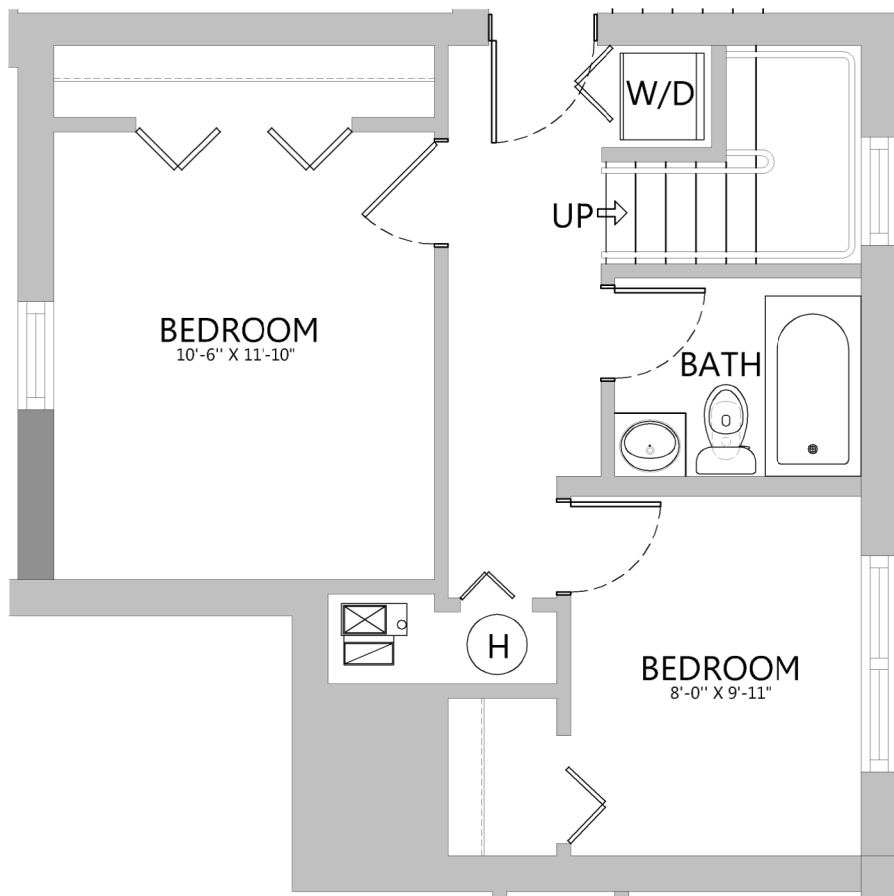
****GENERAL NOTE:** All square footages and room dimension are approximate and may vary (from 5% +/-) from floor plans provided. All homes are sold in as is condition and pricing, promotional programs and incentives are subject to change without notice**



HP VENTURES GROUP LLC
CHRISTIANA PROJECT



Christiana Unit 3337 #1



APPROXIMATE LIVING AREA PER BOMA STANDARDS: 1,006 SF

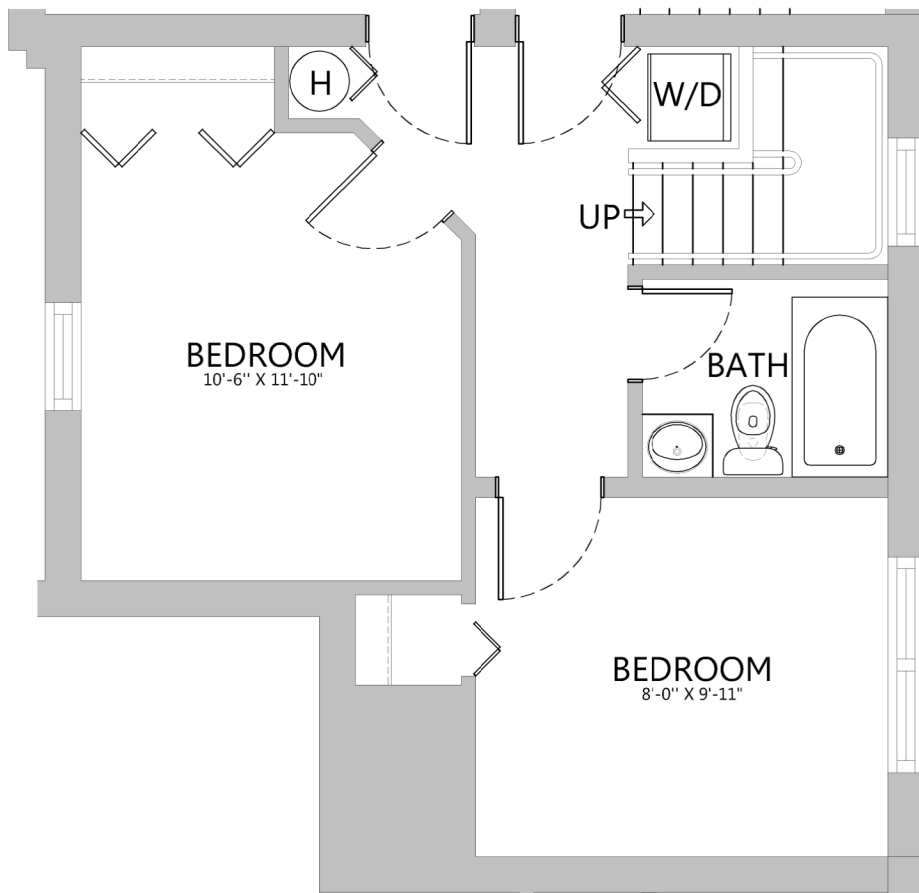
GENERAL NOTE: All square footages and room dimension are approximate and may vary (from 5% +/-) from floor plans provided. All homes are sold in as is condition and pricing, promotional programs and incentives are subject to change without notice



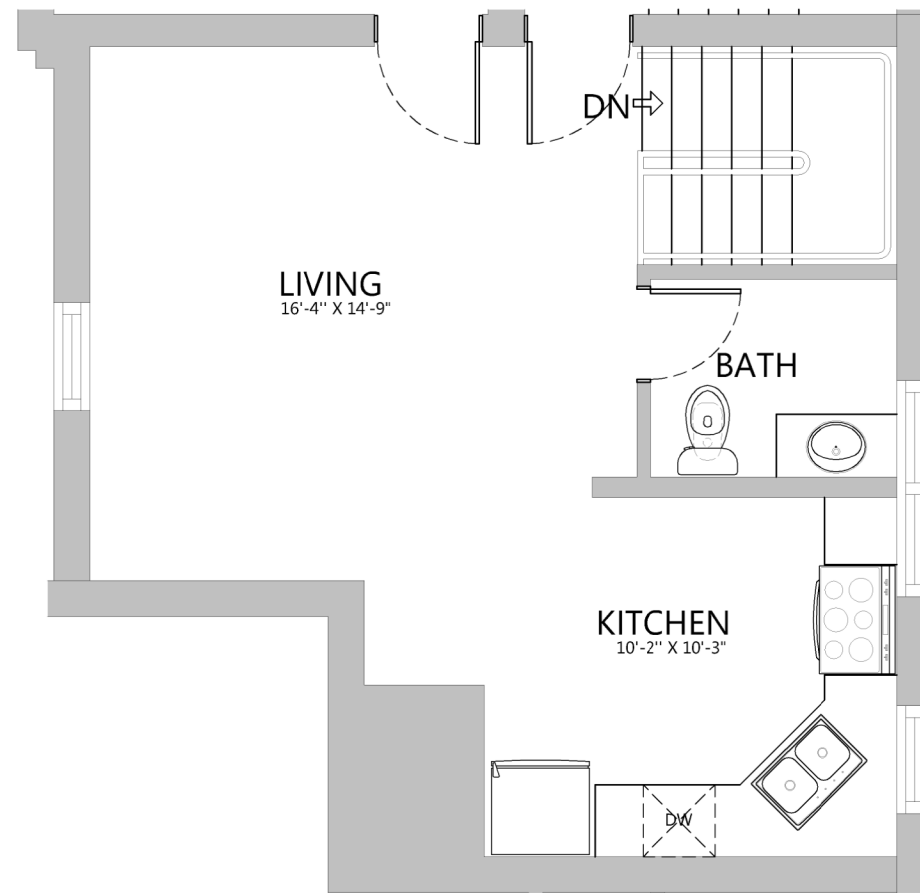
HP VENTURES GROUP LLC
CHRISTIANA PROJECT



Christiana Unit 3337 #2



LOWER LEVEL: 503 SF



UPPER LEVEL: 503 SF

APPROXIMATE LIVING AREA PER BOMA STANDARDS: 1,006 SF

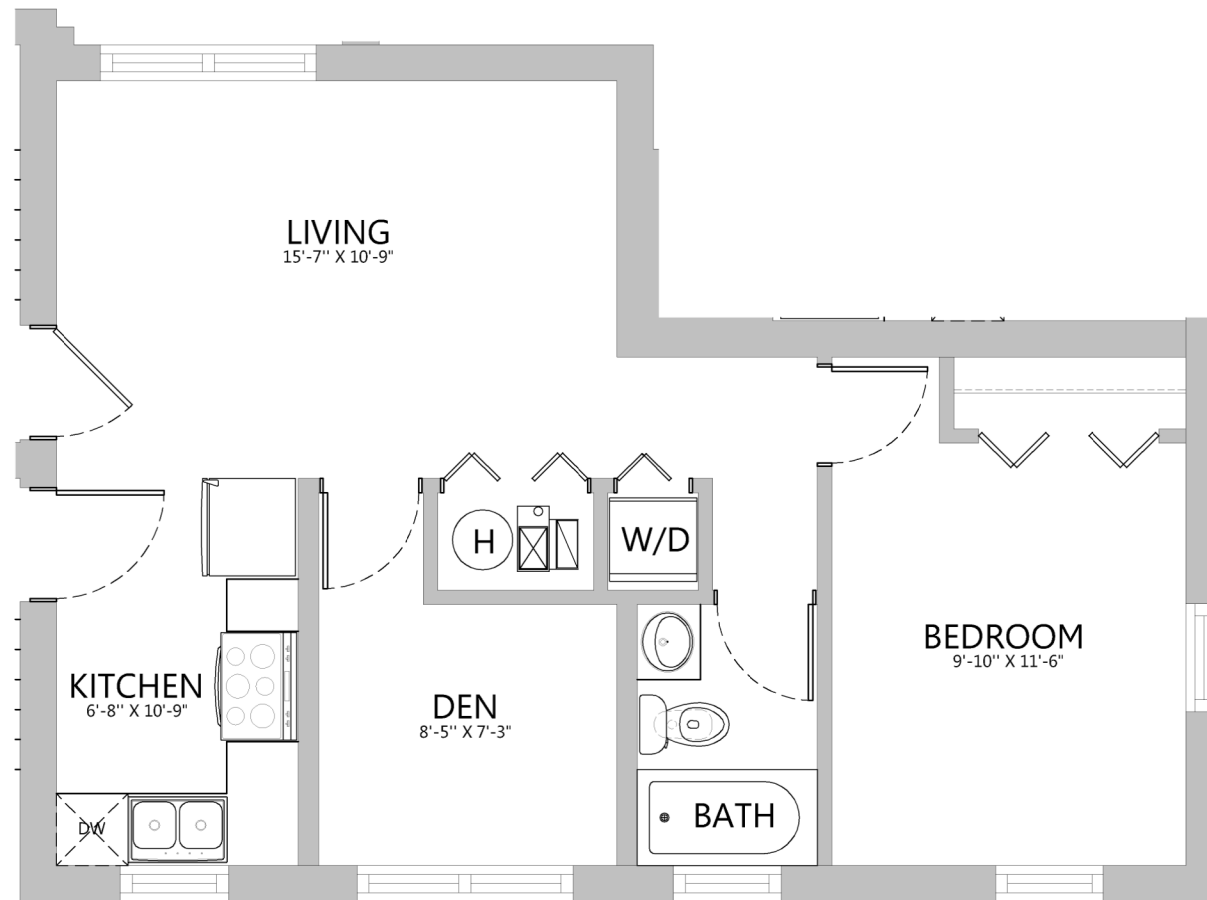
****GENERAL NOTE:** All square footages and room dimension are approximate and may vary (from 5% +/-) from floor plans provided. All homes are sold in as is condition and pricing, promotional programs and incentives are subject to change without notice**



HP VENTURES GROUP LLC
CHRISTIANA PROJECT



Christiana Unit 3339 #1



APPROXIMATE LIVING AREA PER BOMA STANDARDS: 635 SF

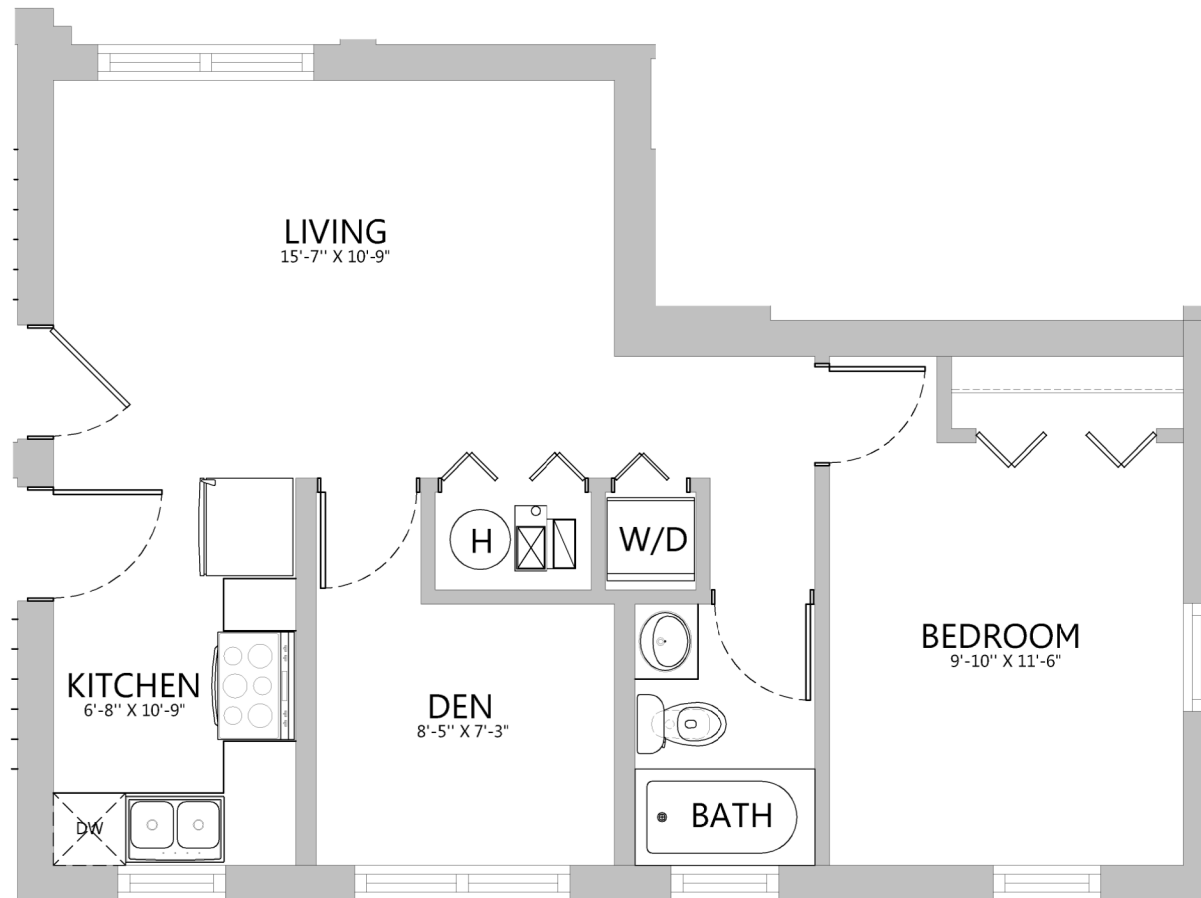
GENERAL NOTE: All square footages and room dimension are approximate and may vary (from 5% +/-) from floor plans provided. All homes are sold in as is condition and pricing, promotional programs and incentives are subject to change without notice



HP VENTURES GROUP LLC
CHRISTIANA PROJECT



Christiana Unit 3339 #2



APPROXIMATE LIVING AREA PER BOMA STANDARDS: 635 SF

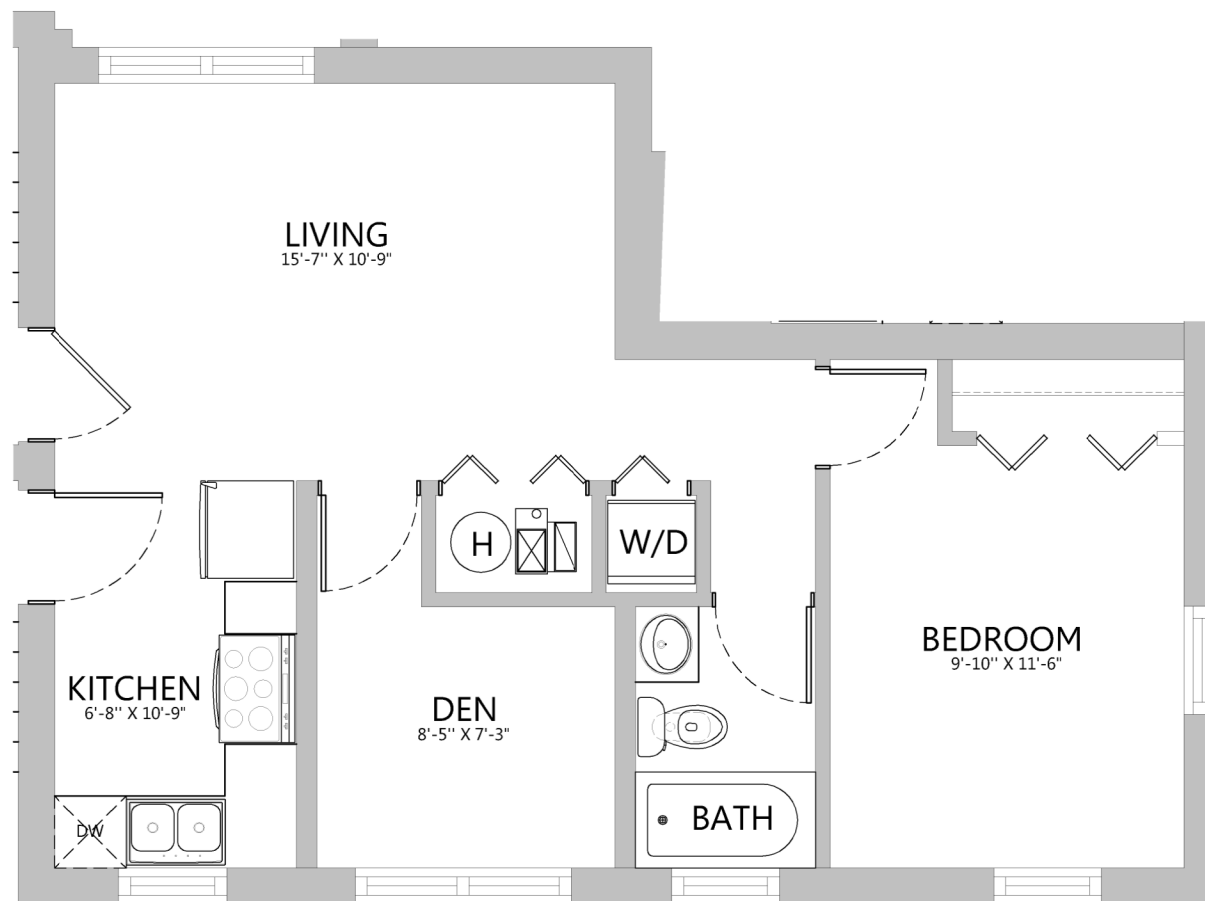
GENERAL NOTE: All square footages and room dimension are approximate and may vary (from 5% +/-) from floor plans provided. All homes are sold in as is condition and pricing, promotional programs and incentives are subject to change without notice



HP VENTURES GROUP LLC
CHRISTIANA PROJECT



Christiana Unit 3339 #3

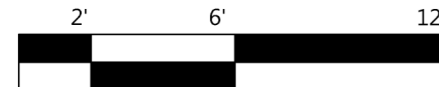


APPROXIMATE LIVING AREA PER BOMA STANDARDS: 635 SF

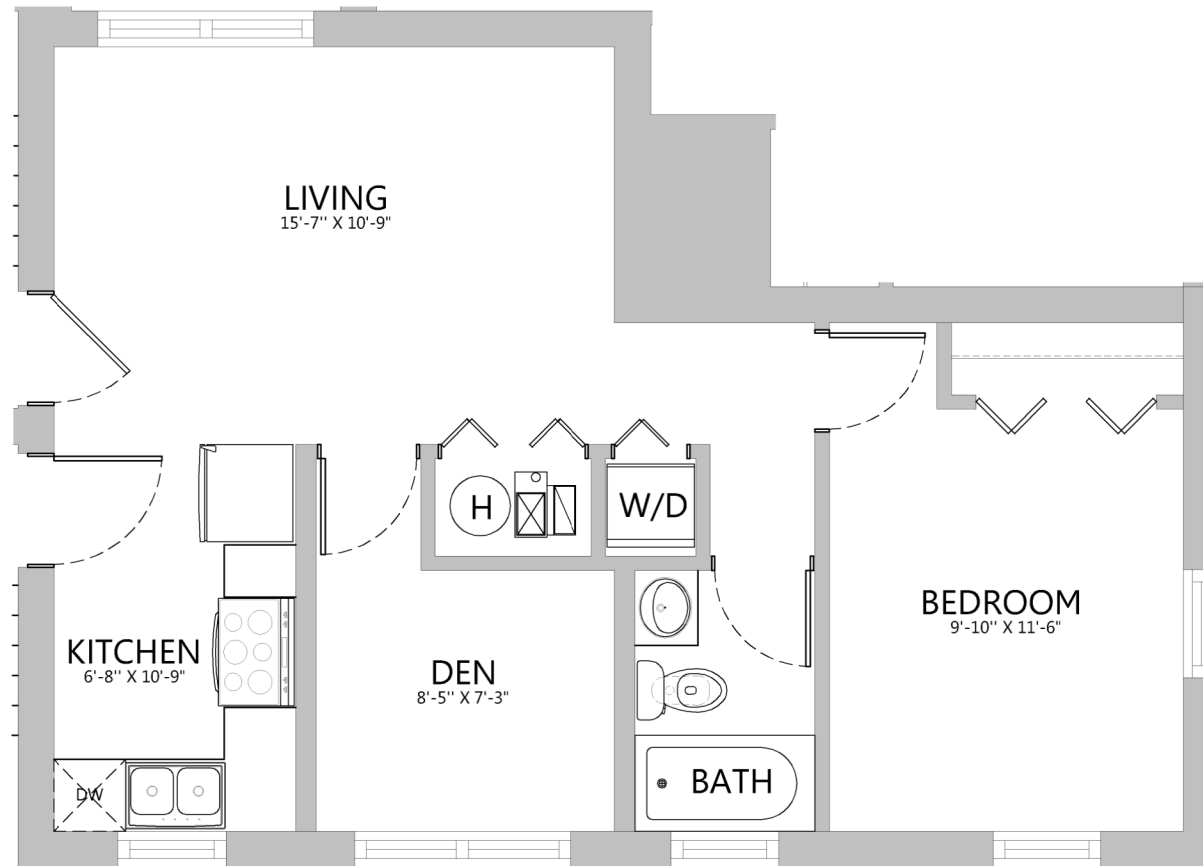
GENERAL NOTE: All square footages and room dimension are approximate and may vary (from 5% +/-) from floor plans provided. All homes are sold in as is condition and pricing, promotional programs and incentives are subject to change without notice



HP VENTURES GROUP LLC
CHRISTIANA PROJECT



Christiana Unit 3339 #G



APPROXIMATE LIVING AREA PER BOMA STANDARDS: 635 SF

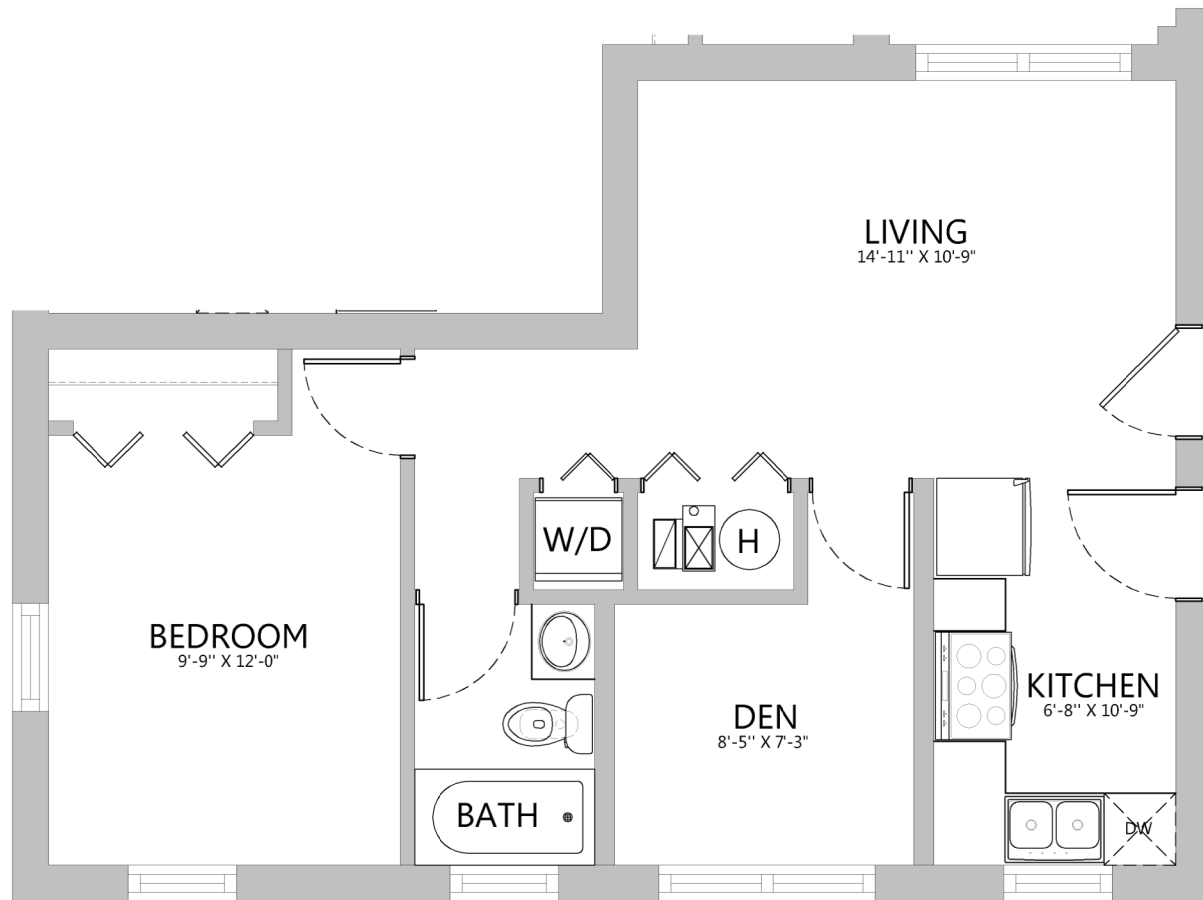
GENERAL NOTE: All square footages and room dimension are approximate and may vary (from 5% +/-) from floor plans provided. All homes are sold in as is condition and pricing, promotional programs and incentives are subject to change without notice



HP VENTURES GROUP LLC
CHRISTIANA PROJECT



Christiana Unit 3341 #1



APPROXIMATE LIVING AREA PER BOMA STANDARDS: 631 SF

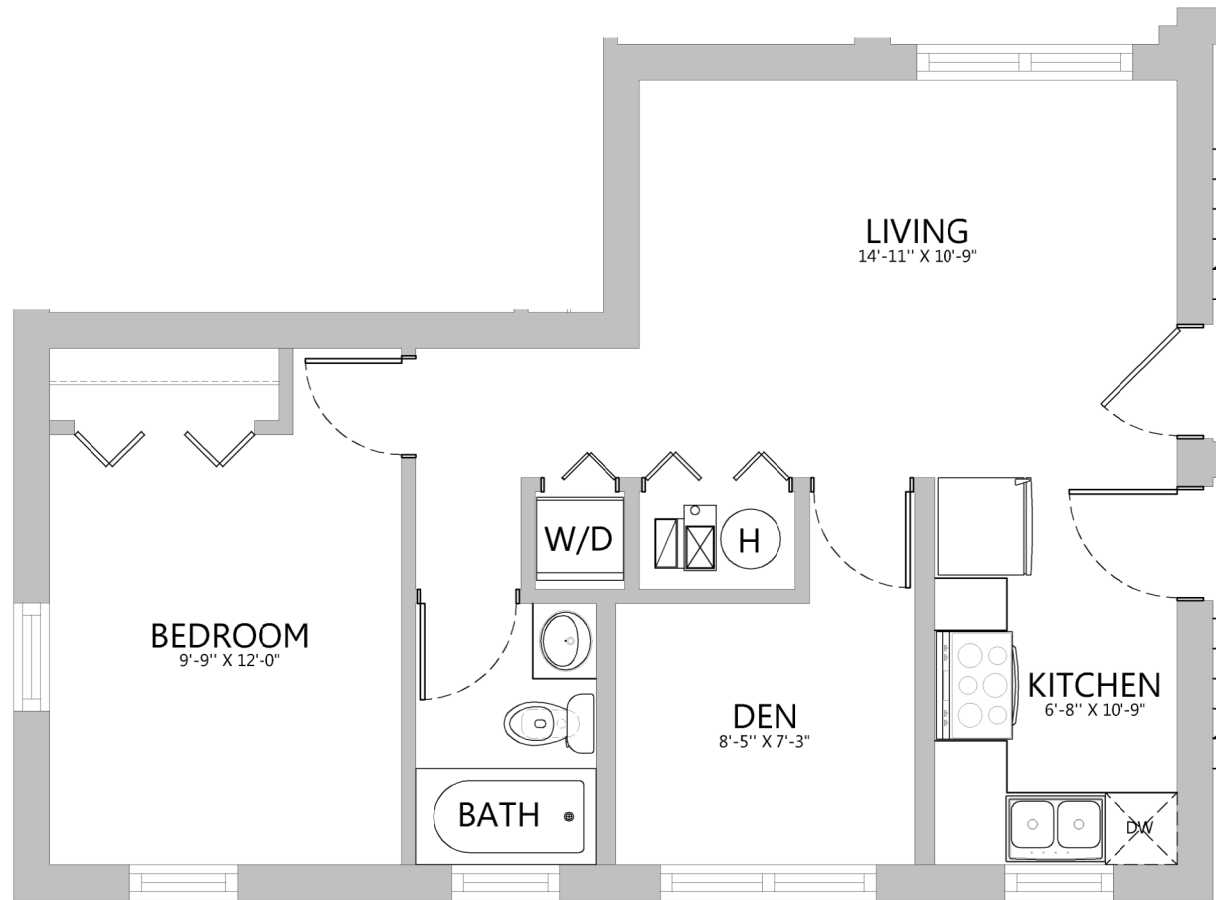
GENERAL NOTE: All square footages and room dimension are approximate and may vary (from 5% +/-) from floor plans provided. All homes are sold in as is condition and pricing, promotional programs and incentives are subject to change without notice



HP VENTURES GROUP LLC
CHRISTIANA PROJECT



Christiana Unit 3341 #2

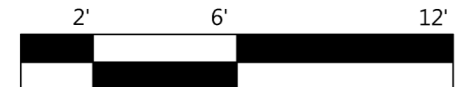


APPROXIMATE LIVING AREA PER BOMA STANDARDS: 631 SF

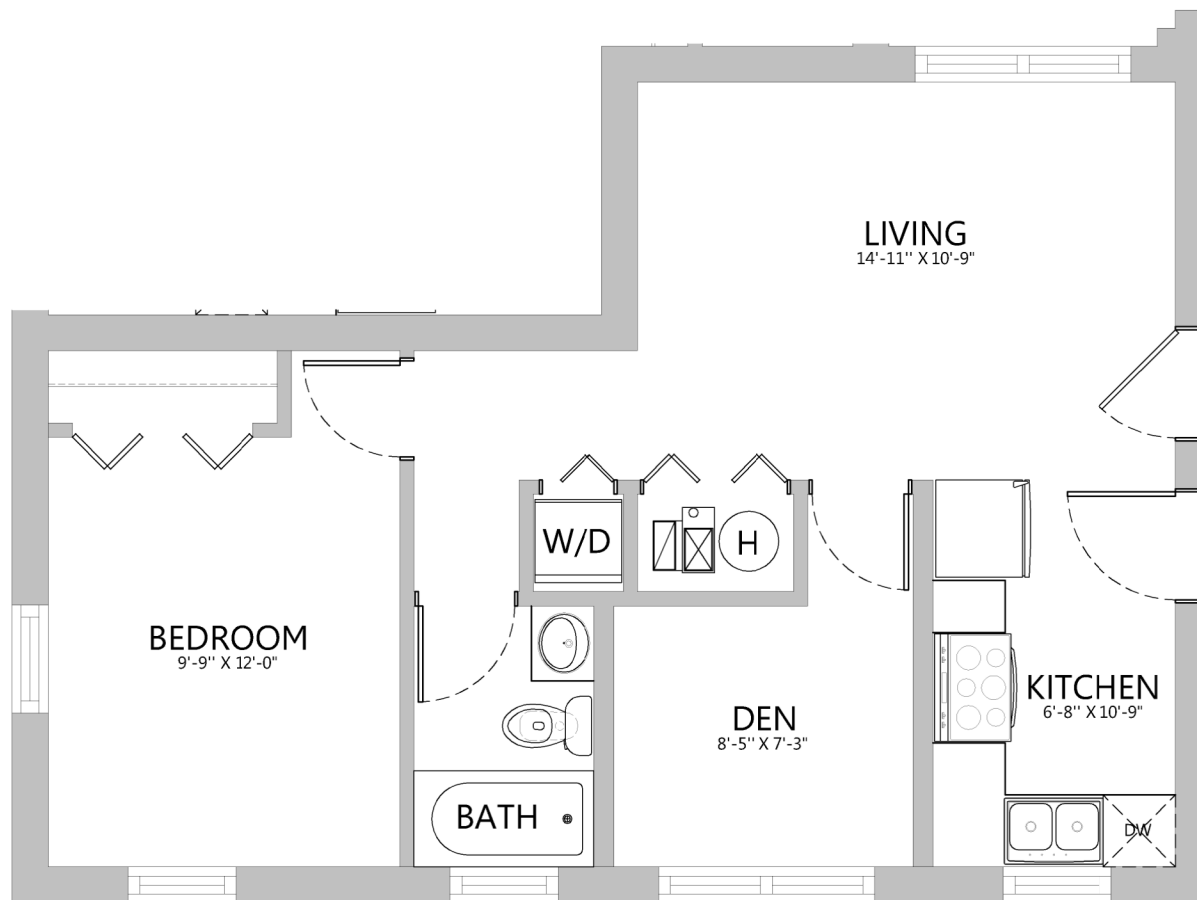
GENERAL NOTE: All square footages and room dimension are approximate and may vary (from 5% +/-) from floor plans provided. All homes are sold in as is condition and pricing, promotional programs and incentives are subject to change without notice



HP VENTURES GROUP LLC
CHRISTIANA PROJECT



Christiana Unit 3341 #3



APPROXIMATE LIVING AREA PER BOMA STANDARDS: 631 SF

GENERAL NOTE: All square footages and room dimension are approximate and may vary (from 5% +/-) from floor plans provided. All homes are sold in as is condition and pricing, promotional programs and incentives are subject to change without notice



HP VENTURES GROUP LLC
CHRISTIANA PROJECT



Christiana Unit 3341 #G



APPROXIMATE LIVING AREA PER BOMA STANDARDS: 631 SF

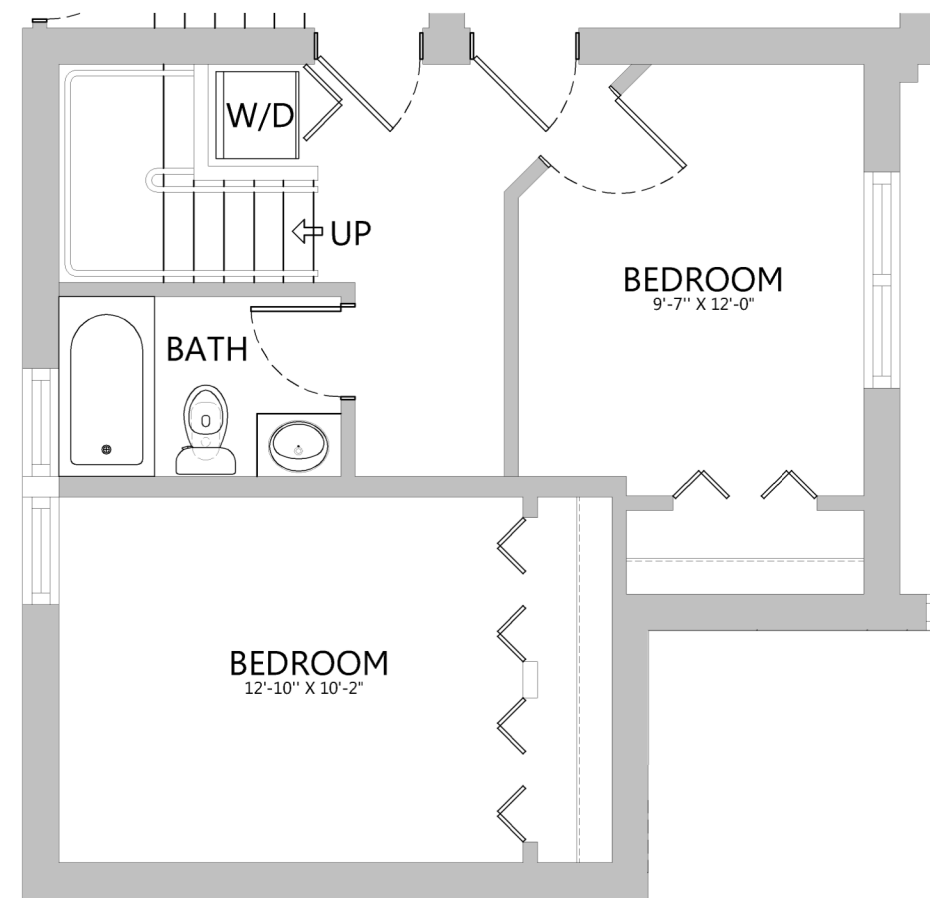
GENERAL NOTE: All square footages and room dimension are approximate and may vary (from 5% +/-) from floor plans provided. All homes are sold in as is condition and pricing, promotional programs and incentives are subject to change without notice



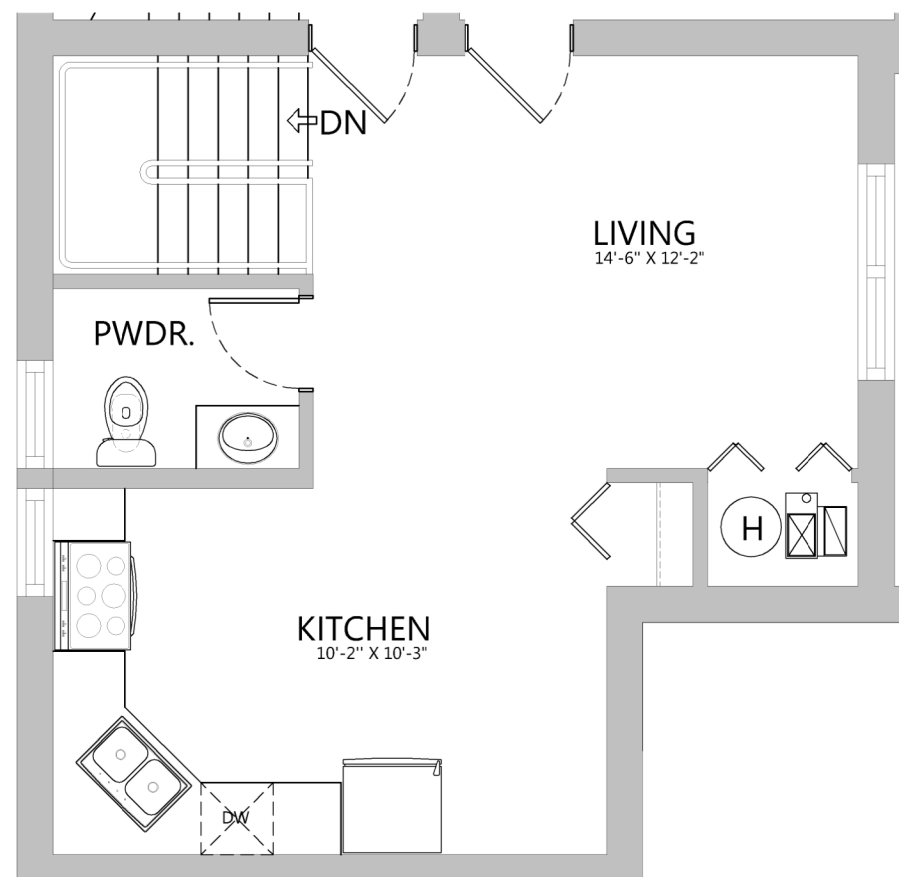
HP VENTURES GROUP LLC
CHRISTIANA PROJECT



Christiana Unit 3343 #1



LOWER LEVEL: 500 SF



UPPER LEVEL: 500 SF

APPROXIMATE LIVING AREA PER BOMA STANDARDS: 1,000 SF

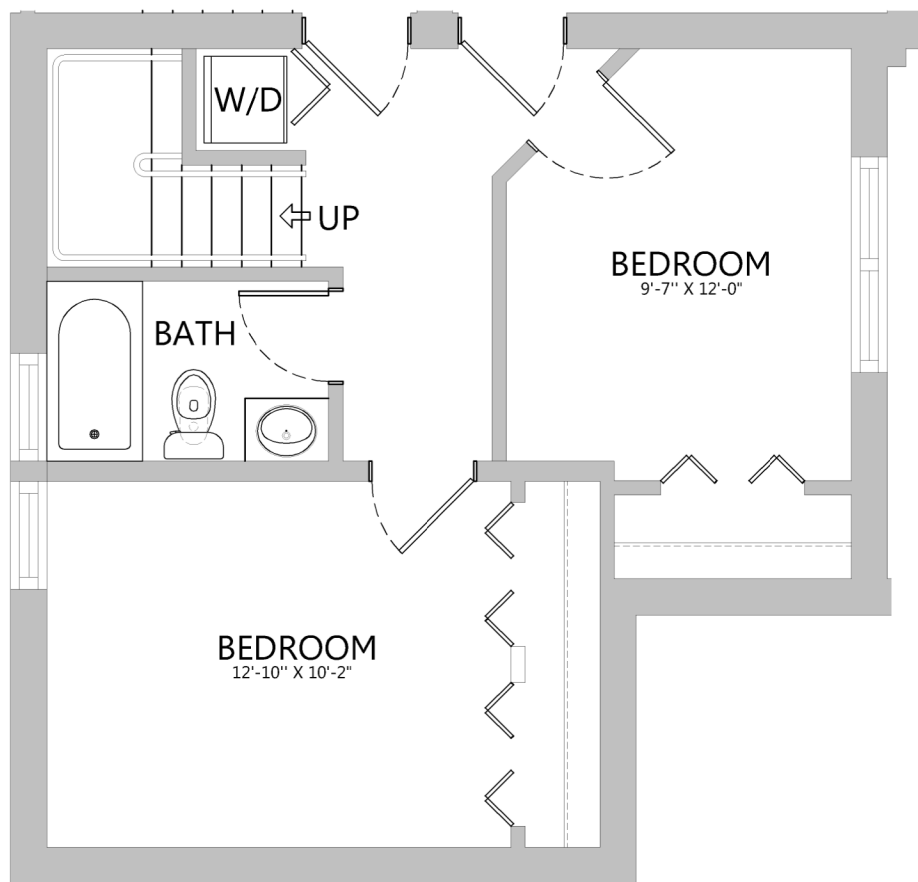
GENERAL NOTE: All square footages and room dimension are approximate and may vary (from 5% +/-) from floor plans provided. All homes are sold in as is condition and pricing, promotional programs and incentives are subject to change without notice



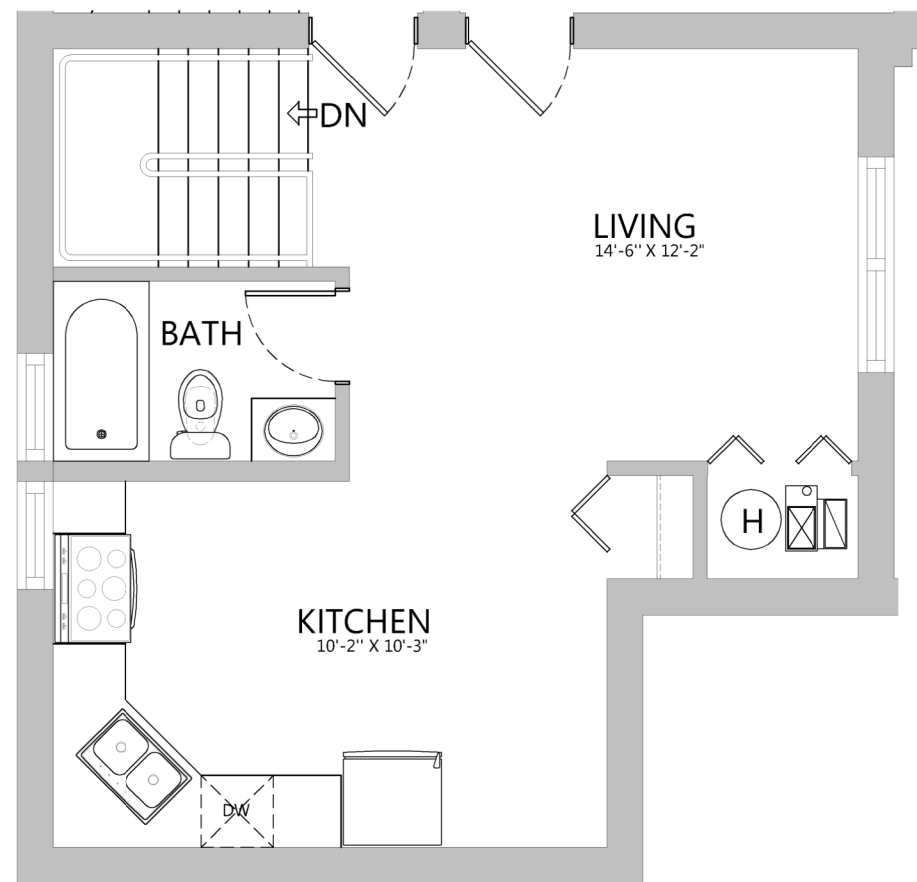
HP VENTURES GROUP LLC
CHRISTIANA PROJECT



Christiana Unit 3343 #2



LOWER LEVEL: 500 SF



UPPER LEVEL: 500 SF

APPROXIMATE LIVING AREA PER BOMA STANDARDS: 1,000 SF

GENERAL NOTE: All square footages and room dimension are approximate and may vary (from 5% +/-) from floor plans provided. All homes are sold in as is condition and pricing, promotional programs and incentives are subject to change without notice



HP VENTURES GROUP LLC
CHRISTIANA PROJECT



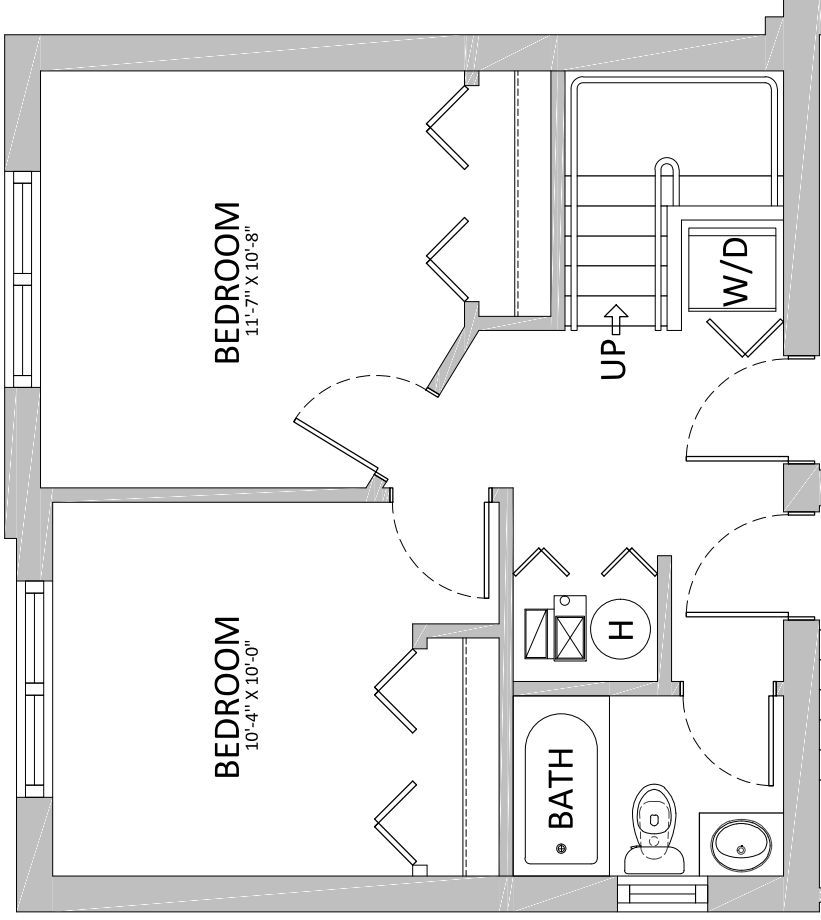
Christiana Unit 3345 #1

the terms are defined in the
/ substantially vary from actual
Property, Parcel, Building, Common
-is, where-is condition, with all
sibility codes/laws/ordinances.
essibility are subject to change.

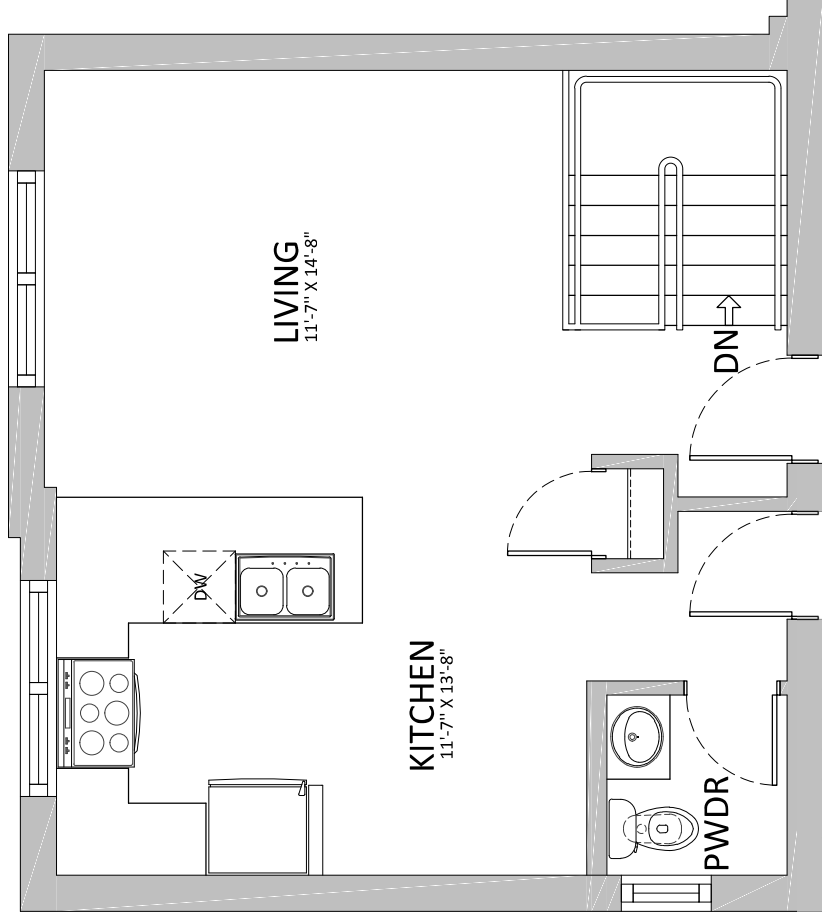


HP VENTURES GROUP LLC
CHRISTIANA PROJECT

**GENERAL NOTE: all information represent
Condominium Declaration Of Condominium
designations, fixtures (type, location, number
conditions. The information contained herein
Elements or Limited Common Elements. All
faults and without any express or implied wa
Seller shall not be responsible to Purchaser f
without notice. **



LOWER LEVEL: 523 SF



UPPER LEVEL: 523 SF

APPROXIMATE LIVING AREA PER BOMA STANDARDS: 1,046 SF
Address: 3339-3341 W. Argyle Street Chicago, IL. 60625

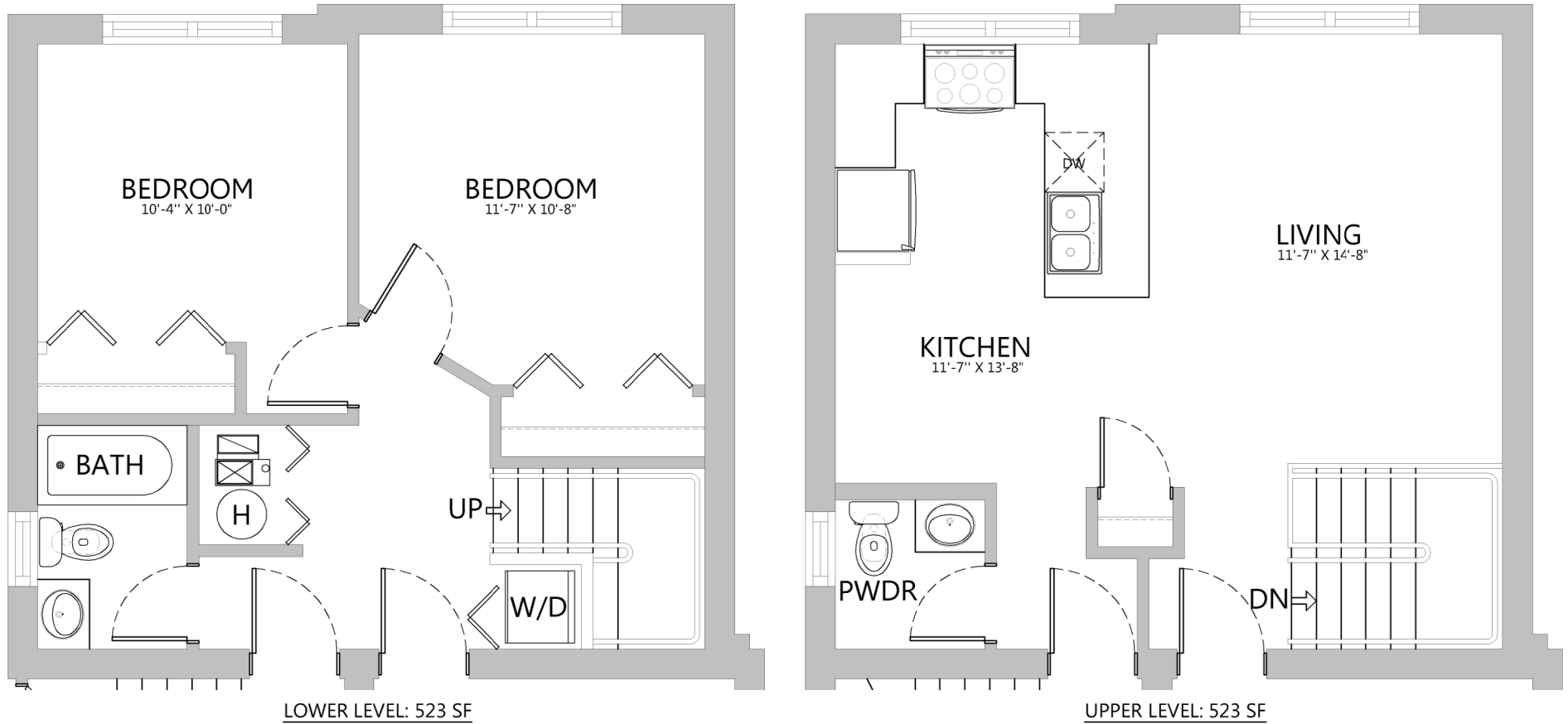


HP VENTURES GROUP LLC
CHRISTIANA PROJECT



01-2018

Christiana Unit 3345 #2



APPROXIMATE LIVING AREA PER BOMA STANDARDS: 1,046 SF

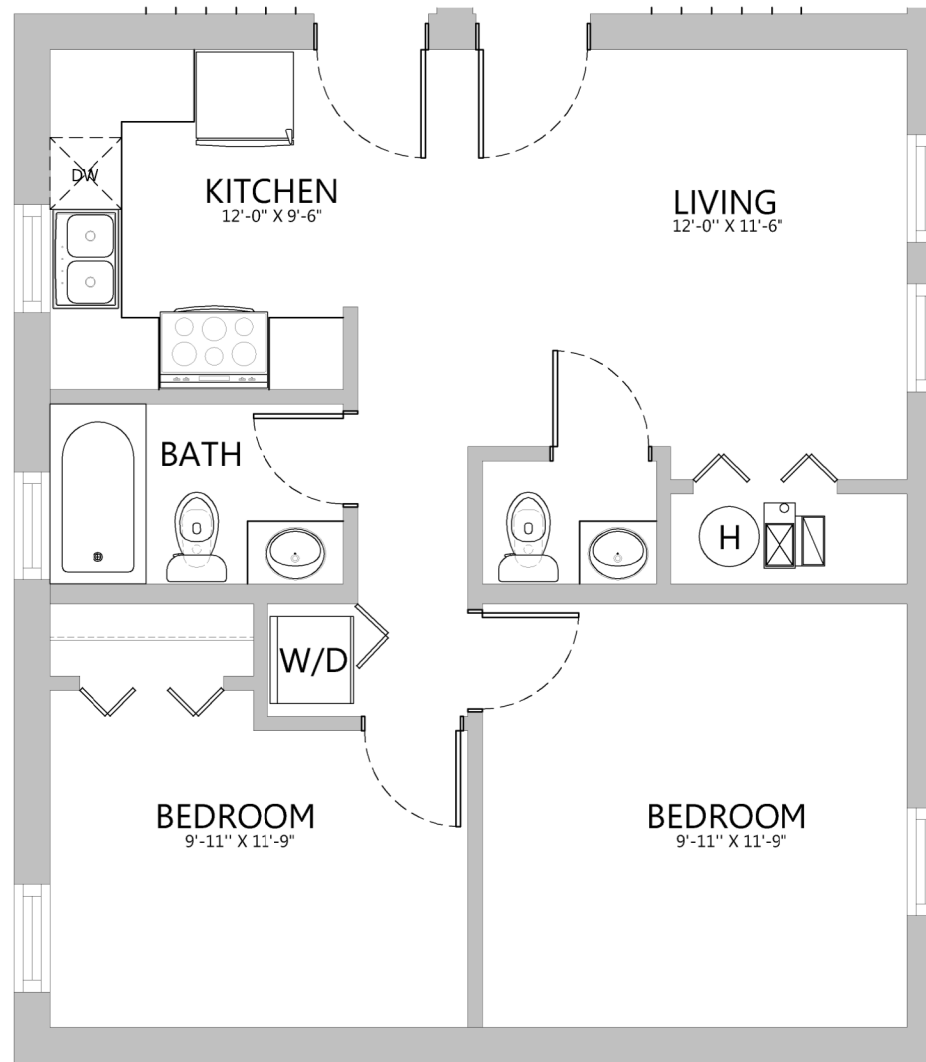
GENERAL NOTE: All square footages and room dimension are approximate and may vary (from 5% +/-) from floor plans provided. All homes are sold in as is condition and pricing, promotional programs and incentives are subject to change without notice



HP VENTURES GROUP LLC
CHRISTIANA PROJECT



Christiana Unit 4954 #1



APPROXIMATE LIVING AREA PER BOMA STANDARDS: 726 SF

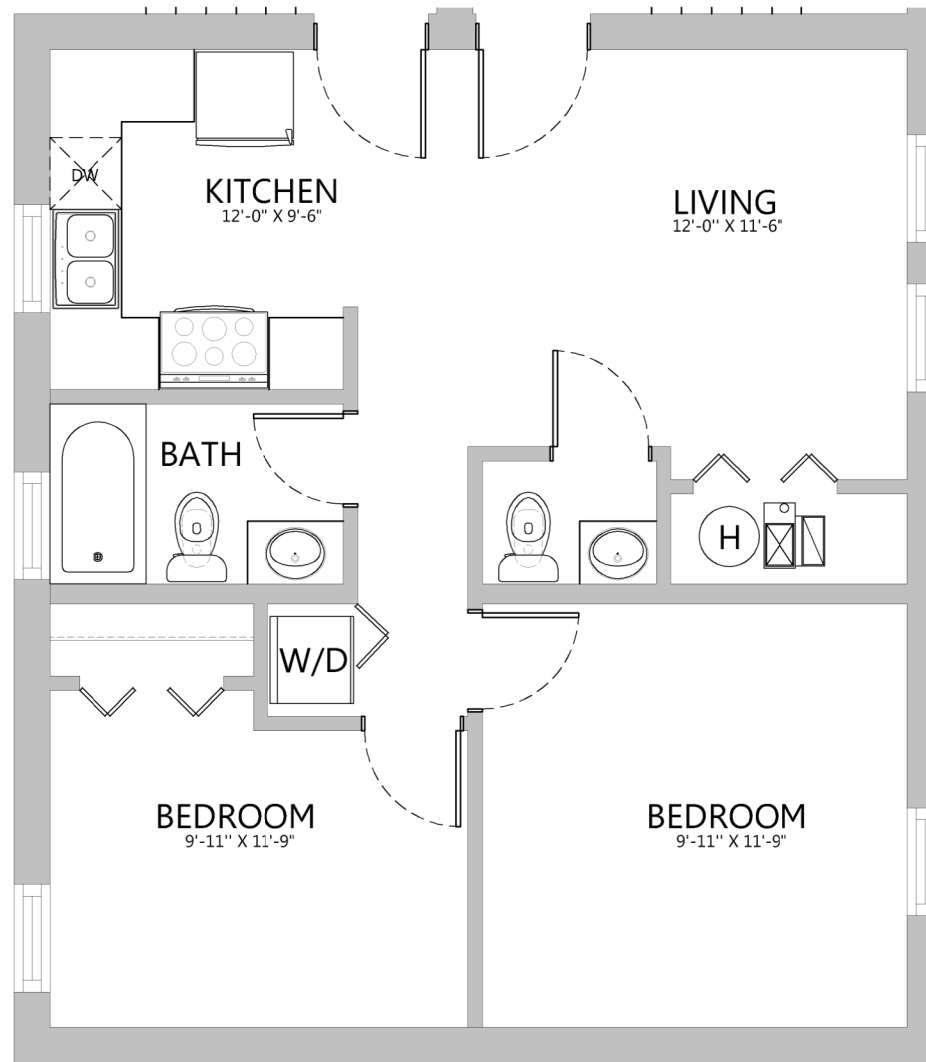
GENERAL NOTE: All square footages and room dimension are approximate and may vary (from 5% +/-) from floor plans provided. All homes are sold in as is condition and pricing, promotional programs and incentives are subject to change without notice



HP VENTURES GROUP LLC
CHRISTIANA PROJECT



Christiana Unit 4954 #2



APPROXIMATE LIVING AREA PER BOMA STANDARDS: 726 SF

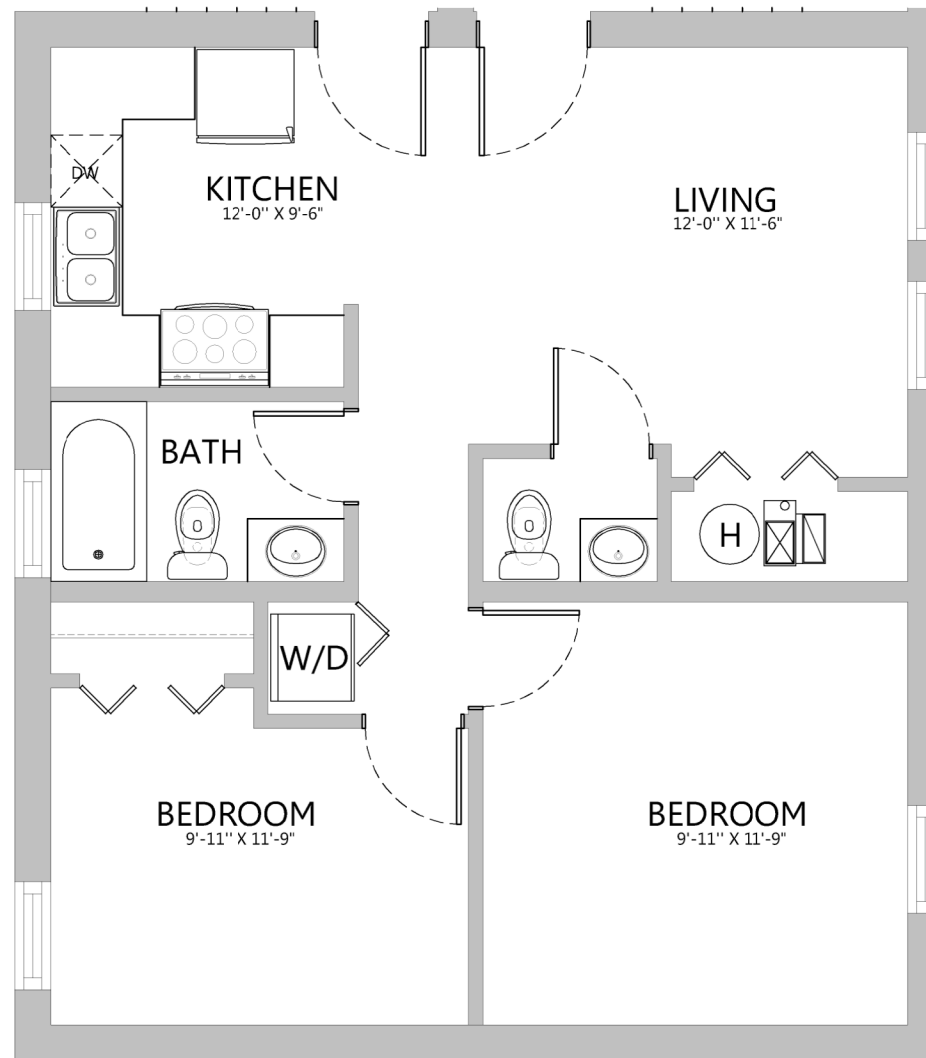
GENERAL NOTE: All square footages and room dimension are approximate and may vary (from 5% +/-) from floor plans provided. All homes are sold in as is condition and pricing, promotional programs and incentives are subject to change without notice



HP VENTURES GROUP LLC
CHRISTIANA PROJECT



Christiana Unit 4954 #3



APPROXIMATE LIVING AREA PER BOMA STANDARDS: 726 SF

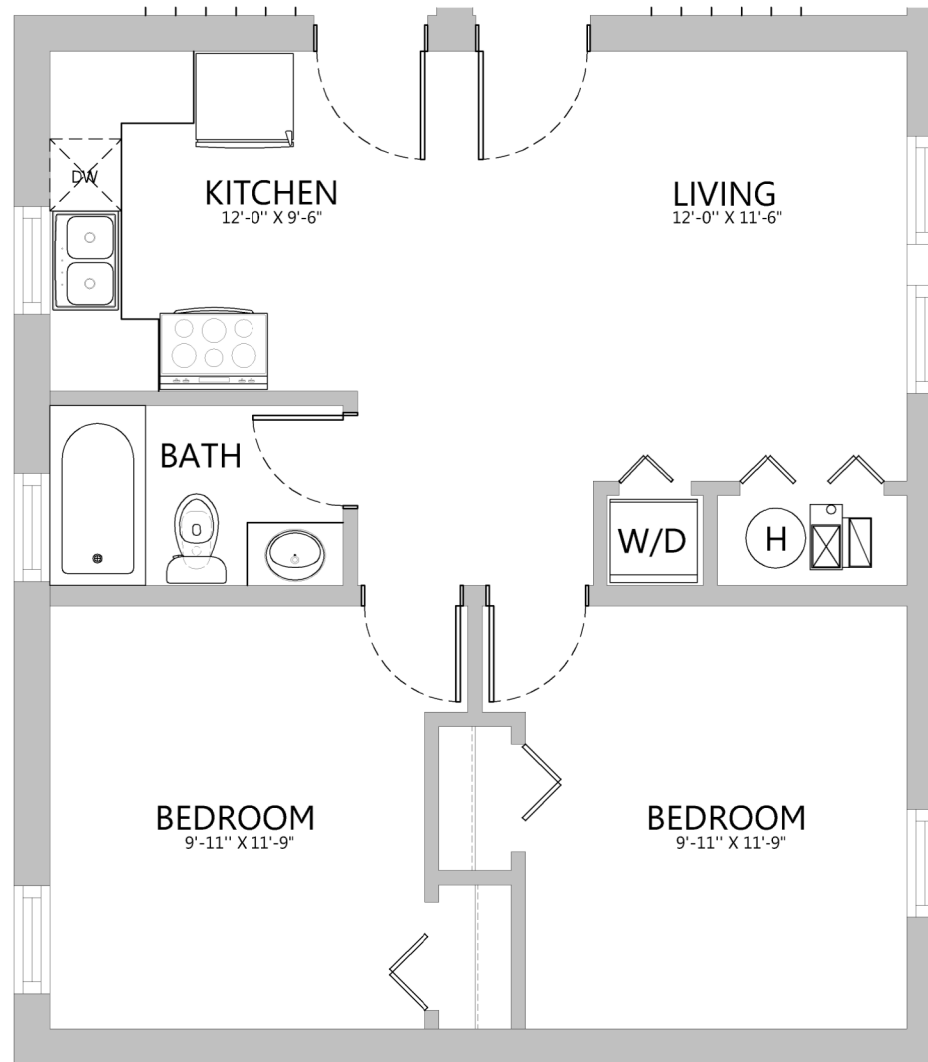
GENERAL NOTE: All square footages and room dimension are approximate and may vary (from 5% +/-) from floor plans provided. All homes are sold in as is condition and pricing, promotional programs and incentives are subject to change without notice



HP VENTURES GROUP LLC
CHRISTIANA PROJECT



Christiana Unit 4954 #G

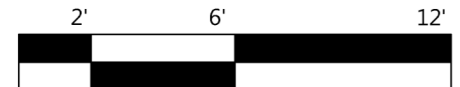


APPROXIMATE LIVING AREA PER BOMA STANDARDS: 726 SF

GENERAL NOTE: All square footages and room dimension are approximate and may vary (from 5% +/-) from floor plans provided. All homes are sold in as is condition and pricing, promotional programs and incentives are subject to change without notice



HP VENTURES GROUP LLC
CHRISTIANA PROJECT



Christiana Unit
4956 #1



APPROXIMATE LIVING AREA PER BOMA STANDARDS: 936 SF

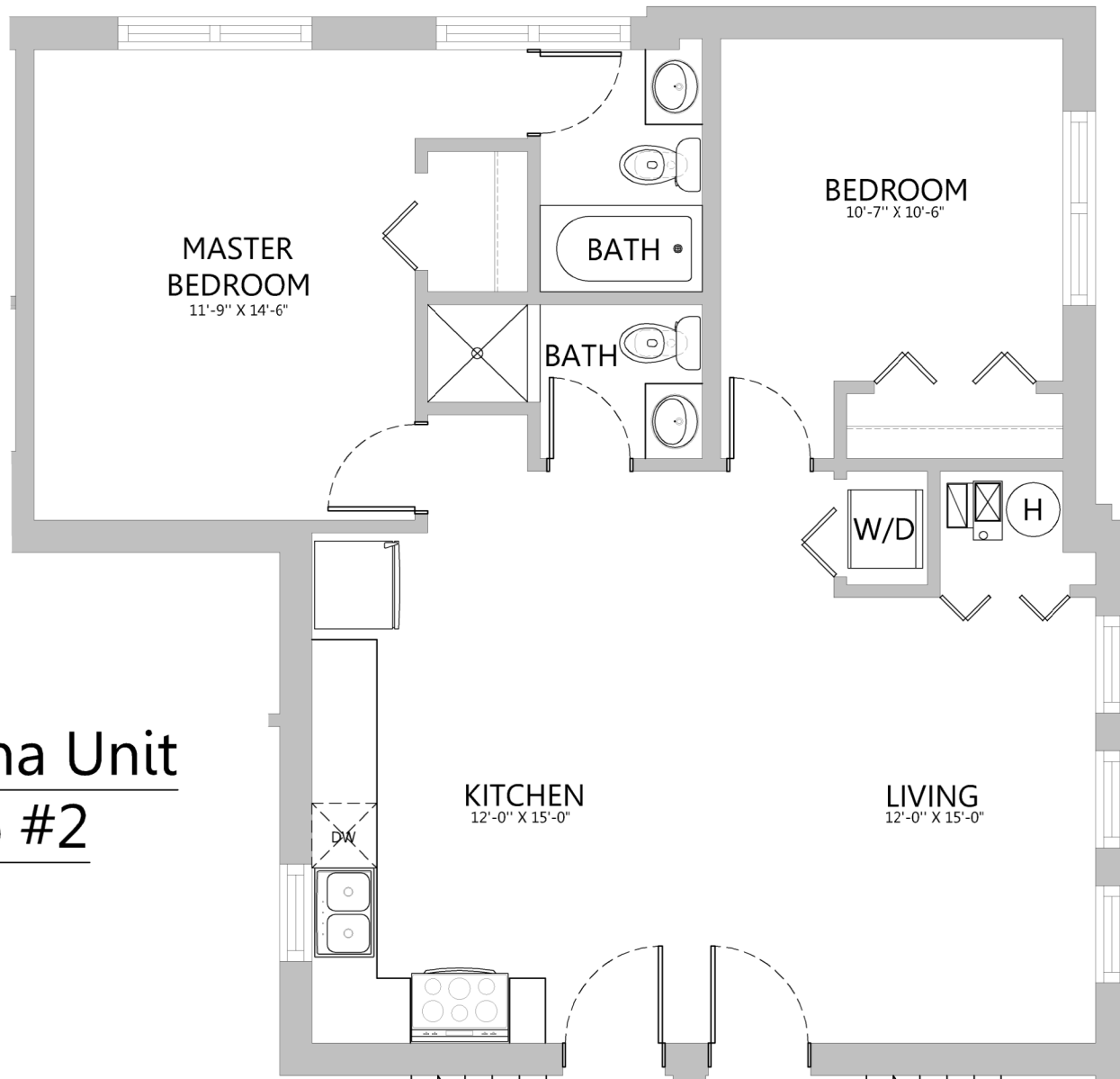
GENERAL NOTE: All square footages and room dimension are approximate and may vary (from 5% +/-) from floor plans provided. All homes are sold in as is condition and pricing, promotional programs and incentives are subject to change without notice



HP VENTURES GROUP LLC
CHRISTIANA PROJECT



Christiana Unit
4956 #2



APPROXIMATE LIVING AREA PER BOMA STANDARDS: 936 SF

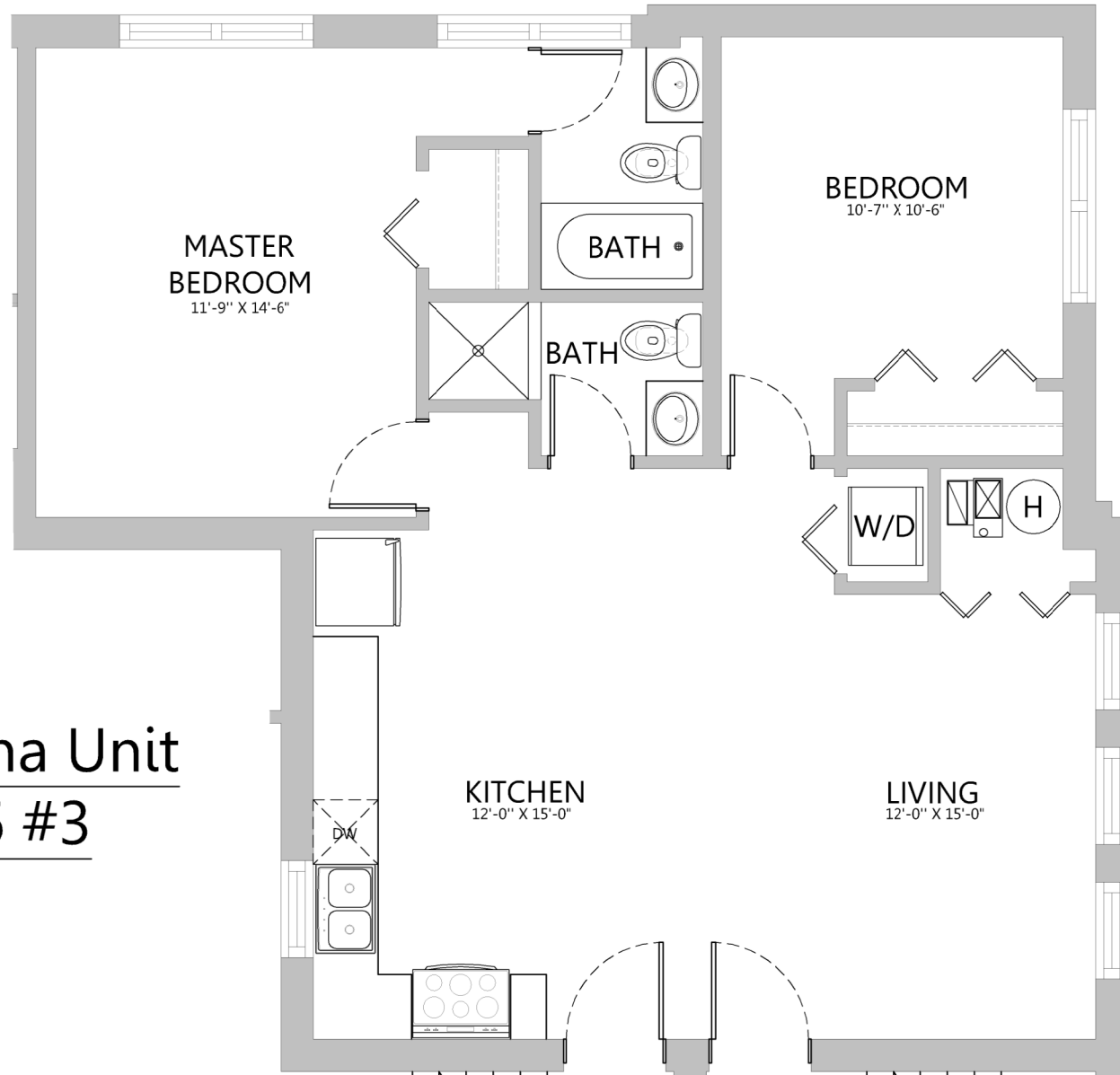
GENERAL NOTE: All square footages and room dimension are approximate and may vary (from 5% +/-) from floor plans provided. All homes are sold in as is condition and pricing, promotional programs and incentives are subject to change without notice



HP VENTURES GROUP LLC
CHRISTIANA PROJECT



Christiana Unit
4956 #3



APPROXIMATE LIVING AREA PER BOMA STANDARDS: 936 SF

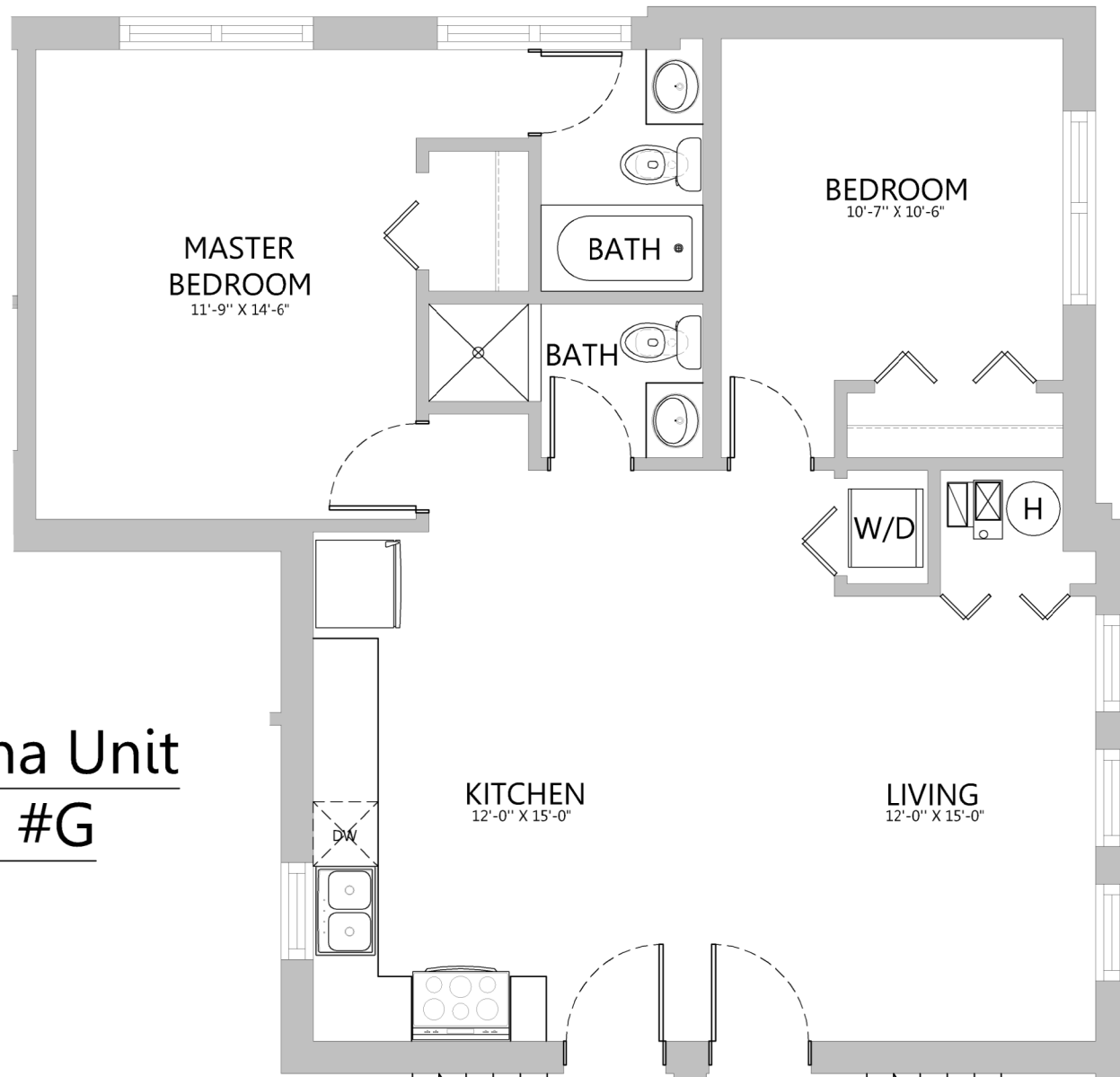
GENERAL NOTE: All square footages and room dimension are approximate and may vary (from 5% +/-) from floor plans provided. All homes are sold in as is condition and pricing, promotional programs and incentives are subject to change without notice



HP VENTURES GROUP LLC
CHRISTIANA PROJECT



Christiana Unit
4956 #G



APPROXIMATE LIVING AREA PER BOMA STANDARDS: 936 SF

GENERAL NOTE: All square footages and room dimension are approximate and may vary (from 5% +/-) from floor plans provided. All homes are sold in as is condition and pricing, promotional programs and incentives are subject to change without notice



HP VENTURES GROUP LLC
CHRISTIANA PROJECT

